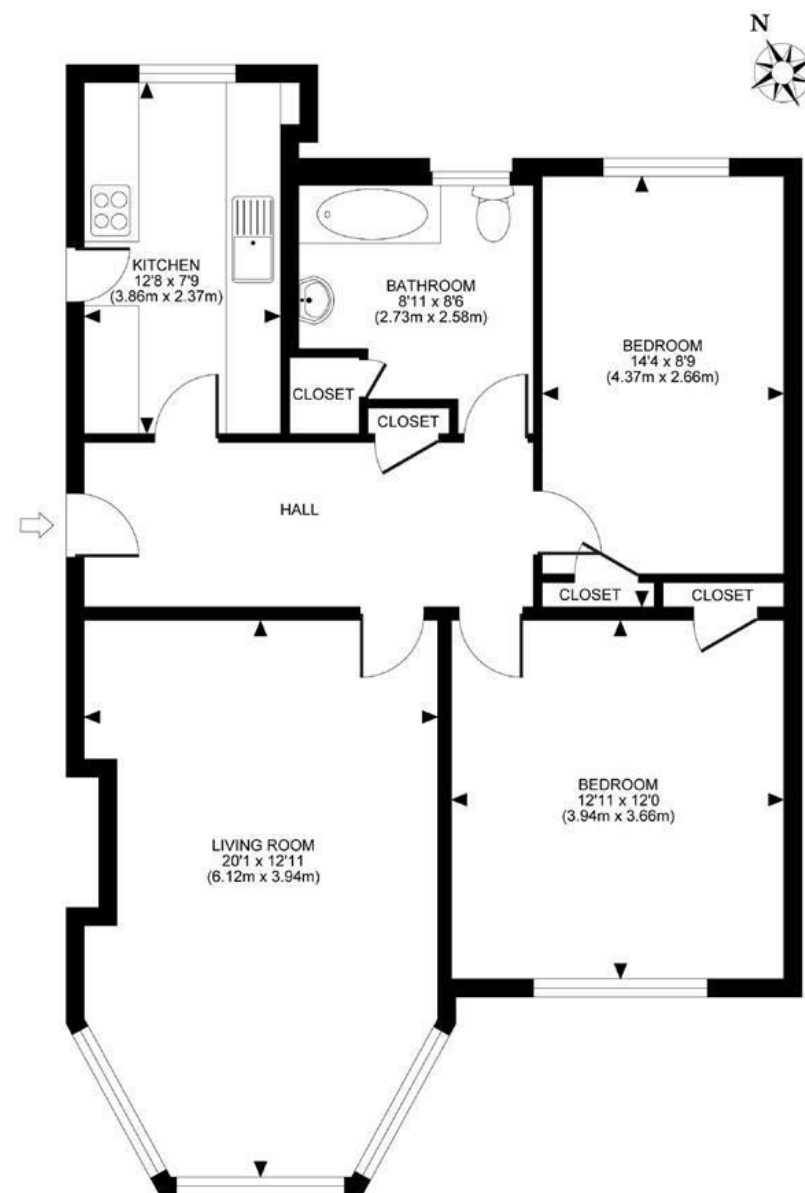


Selwyn House, Putney, SW15

This immaculately presented two double bedroom flat is located on the second floor (with lift) of Selwyn House and is superbly situated within the prestigious Manor Fields Estate. Set within acres of beautifully maintained grounds Manor Fields offers off street parking, 24 hour security and is located within an 8 minute walk to Putney High Street and the mainline Station. Offered on an unfurnished basis the accommodation comprises an oak panelled entrance hallway, spacious reception room with stunning views, modern, fully fitted kitchen, two double bedrooms and modern bathroom. Manor Fields is a prestigious private development perfectly located for all the amenities Putney has to offer as well as close to numerous highly regarded schools. Available July 2022.

SELWYN HOUSE, MANOR FIELDS, SW15
TOTAL APPROX. FLOOR PLAN AREA 821 SQ.FT (76 SQ.M.)



All measurements walls, doors, windows, fittings and their appliances, their size and locations are shown conventionally and are approximate only and cannot be regarded as being a representation either by the seller or his agent nor zentuvo
www.zentuvo.co.uk

DISCLAIMER•These particulars are intended to give a fair and substantially correct overall description for the guidance of intending purchasers and do not constitute an offer or part of a contract. Prospective purchasers and/or lessees ought to seek their own professional advice.

•All descriptions, dimensions, areas, references to condition and necessary permissions for use and occupation and other details are given in good faith and are believed to be correct, but any intending purchasers should not rely on them as statements or representations of fact, but must satisfy themselves by inspection or otherwise as to the correctness of each of them.

•All measurements are approximate.



- LARGE RECEPTION
- FITTED KITCHEN
- OAK PANELLED HALLWAY
- OFF STREET PARKING
- EPC C
- TWO DOUBLE BEDROOMS
- SMART BATHROOM
- COMMUNAL GARDENS
- 24 HOUR SECURITY
- COUNCIL TAX BAND E

Per Calendar Month
£2,250 Per Calendar Month



